

SPITI VALLEY

Road Trip 5N/6D



+91 8287828267 | 8287586228

www.enlivetrips.com

TABLE OF *Contents*

- 01 Brief Itinerary
- 02 Detailed Itinerary
- 03 Inclusions
- 04 Exclusions
- 05 Costing
- 06 Social Media Handles
- 07 Booking Process
- 08 Payment Policy
- 09 Our Batches
- 10 Things to Carry
- 11 Cancellation Policy
- 12 Terms & Conditions





06 DAYS

Delhi to Delhi

Brief Itinerary

- 🚩 **DAY 0**
Delhi to Manali | Overnight Journey
- 🚩 **DAY 1**
Manali Arrival | Day at Leisure
- 🚩 **DAY 2**
Manali to Kaza (200 Kilometers,
9 Hours Drive Approx)
- 🚩 **DAY 3**
Spiti Sightseeing Day 1 (Pin valley,
Tabo, Dhankar)
- 🚩 **DAY 4**
Spiti Sightseeing Day 2 (Hikkim,
Komic, Langza)
- 🚩 **DAY 5**
Kaza to Chandratal (90 Kilometers,
7 Hours Drive Approx)
- 🚩 **DAY 6**
Chandratal to Manali (125 Kilometers,
7 Hours Drive Approx)



DETAILED *Itinerary*



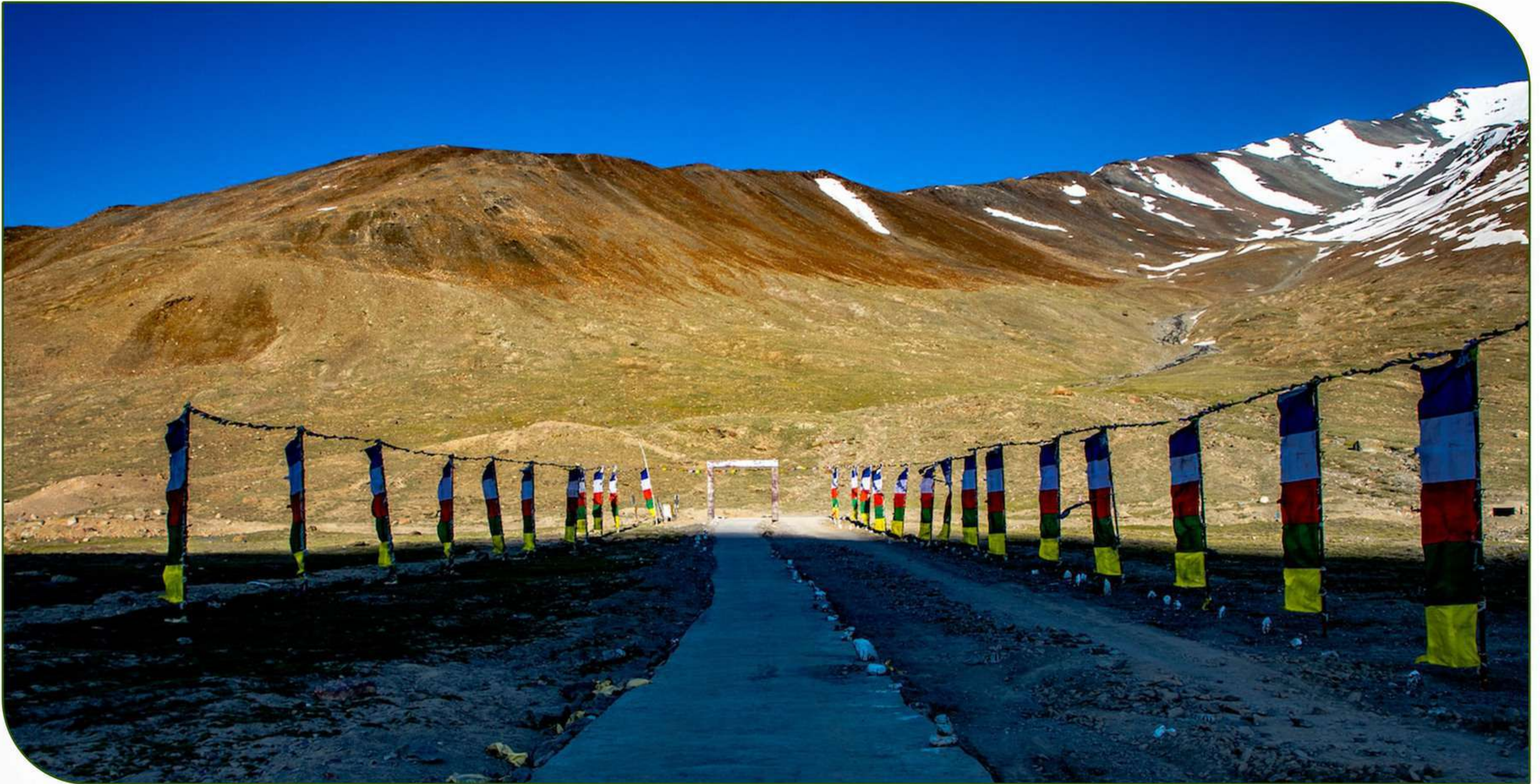
Day 0: DELHI TO MANALI | OVERNIGHT JOURNEY

- ▶ The group will assemble at the pick-up point by 7:00 PM (tentative).
- ▶ We'll meet the team captains and a small tour briefing session will be conducted.
- ▶ After which, we'll head out on an overnight journey to Manali.



Day 1: MANALI ARRIVAL | DAY AT LEISURE

- We will reach Manali early in the morning.
- Post-check-in, the rest of the day is at leisure. Travelers are advised to indulge in cafe hopping, shopping etc.
- Dinner will be served in the evening followed by an overnight stay in Manali.



Day 2: MANALI TO KAZA (200 KMS, 9 HOURS DRIVE APPROX)

- ▶ After early morning breakfast, we will head out to Kaza.
- ▶ En route, we'll be traversing through the iconic Kunzum Pass.
- ▶ We will reach the headquarters of Spiti, Kaza by late evening and check in to our designated stays.
- ▶ Dinner will be served in the evening followed by an overnight stay in Kaza.



Day 3: SPITI SIGHTSEEING DAY 1 (PIN VALLEY, TABO, DHANKAR)

- ▶ Post breakfast, we will head out for a sightseeing tour where we'll visit the Kungri Monastery in Pin Valley followed by a visit to the thousand-year-old Tabo Monastery where we'll pay a brief visit.
- ▶ Lastly, we'll visit the Dhankar Monastery which is nestled at an altitude of 12,774 ft on a cliffside overlooking the village along with the Dhankar Fort.
- ▶ In the evening, we'll head back to our designated stay. Dinner followed by an overnight stay in Kaza.



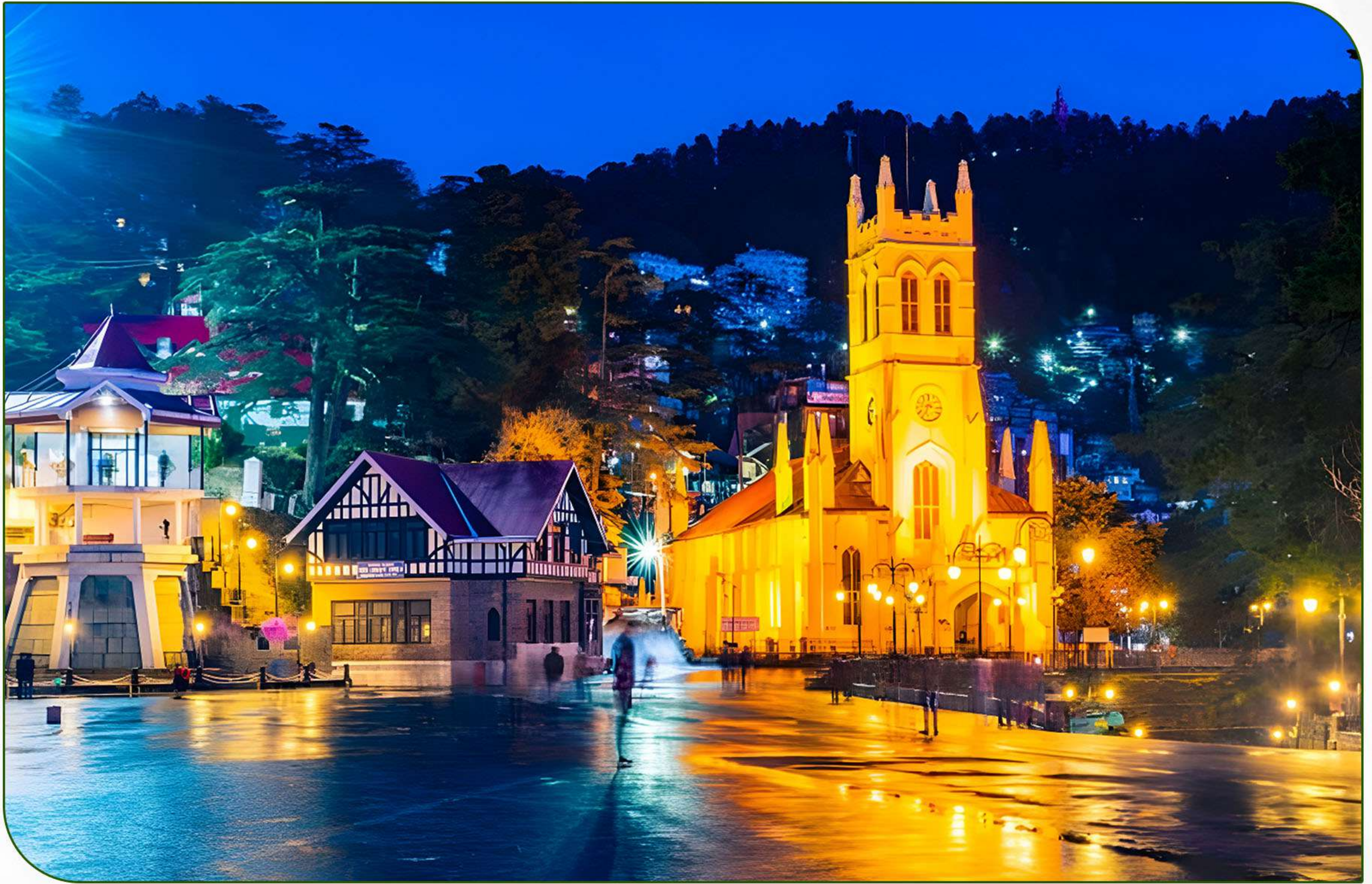
Day 4: SPITI SIGHTSEEING DAY 2 (HIKKIM, KOMIC, LANGZA)

- ▶ Post breakfast, we'll head out to visit the Key Monastery locally known as Kye Gompa followed by a visit to the highest post office in the world, Hikkim.
- ▶ Afterward, we'll move towards Komic village which is one of the highest villages in the world connected by a motorable road.
- ▶ Last but not least, we will visit the land of fossils, Langza, and visit the Buddha statue that sits on top of a hill overlooking the village.
- ▶ Finally, we'll head back to Kaza where we will have dinner and spend the night.



Day 5: KAZA TO CHANDRATAL (90 KMS, 7 HRS DRIVE APPROX)

- ▶ Post-breakfast, we will head out to visit the pristine Chandratatal which is a crescent-shaped lake mimicking the moon.
- ▶ En route, we will make a brief stop at Chicham Bridge which is Asia's highest bridge.
- ▶ Upon arrival at our designated campsites, we'll check in and then head towards the Chandratatal lake to spend some leisure time by the lakeside.
- ▶ Dinner will be served in the evening followed by an overnight stay in the campsites.

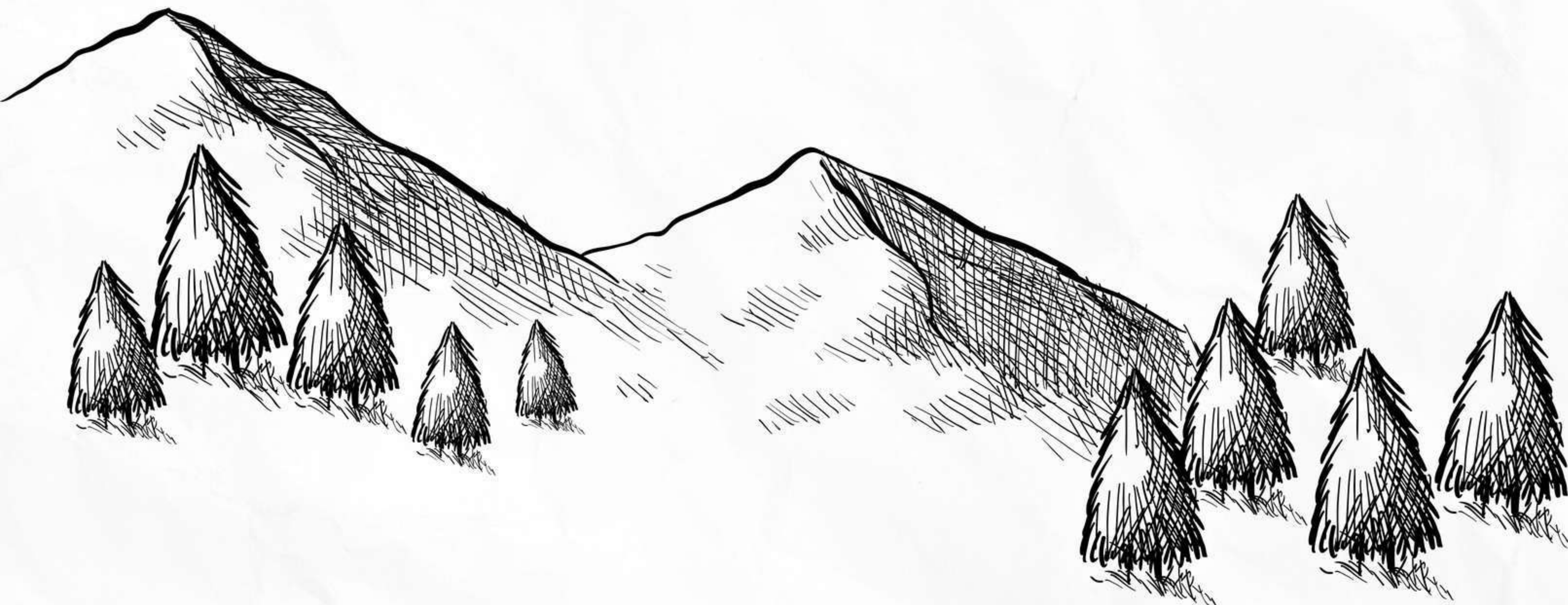


Day 6: CHANDRATAL TO MANALI (125 KMS, 7 HRS DRIVE APPROX)

- ▶ After early morning breakfast, we'll check out of our campsites and start our return journey to Manali.
- ▶ Upon our arrival in Manali, we'll spend the rest of the day at leisure.
- ▶ In the evening, we will board the bus for an overnight drive to Delhi.
- ▶ Reach Delhi Next Day early morning with loads of memories.

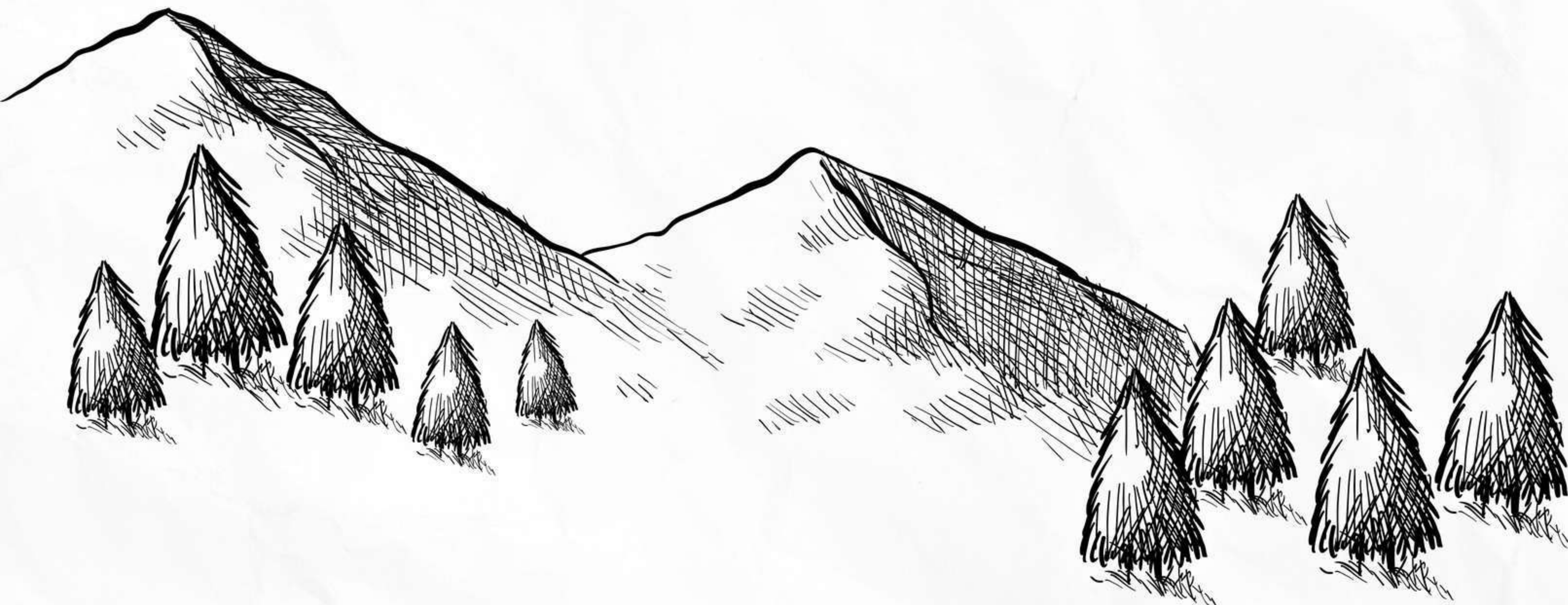
INCLUSIONS

- ✓ Transportation in Tempo Traveler from Manali to Manali.
- ✓ AC Volvo Bus from Delhi to Manali and return.
- ✓ Accommodations on sharing basis as per itinerary.
- ✓ Meal Plan: MAP Plan (Total 10 Meals - 1 Meal on Day 2 (D) + 2 Meals on Day 3 (B+D) + 2 Meals on Day 4 (B+D) + 2 Meals on Day 5 (B+D) + 2 Meals on Day 6 (B+D) + 1 Meal on Day 7 (B))
- ✓ The trip Leader will be present at all times during the tour.
- ✓ Mechanical Support
- ✓ All permits Required
- ✓ First Aid Kits
- ✓ Oxygen Cylinders
- ✓ Oximeter



EXCLUSIONS

- ✗ 5% GST
- ✗ Early check-in at the hotel.
- ✗ Any additional expenses of personal nature.
- ✗ Additional accommodation/food costs incurred due to any travel delay.
- ✗ Any lunch and other meals not mentioned in Package Inclusions.
Any Airfare / Rail fare other than what is mentioned in "Inclusions" or any type of transportation.
- ✗ Parking and monument entry fees during sightseeing.
- ✗ Additional Costs due to Flight Cancellations, Landslides,
- ✗ Roadblocks, and other natural calamities.
- ✗ Any other services not specified above in inclusions.



COSTING

Per Person

Double Sharing: ₹ 18,000 + 5% GST

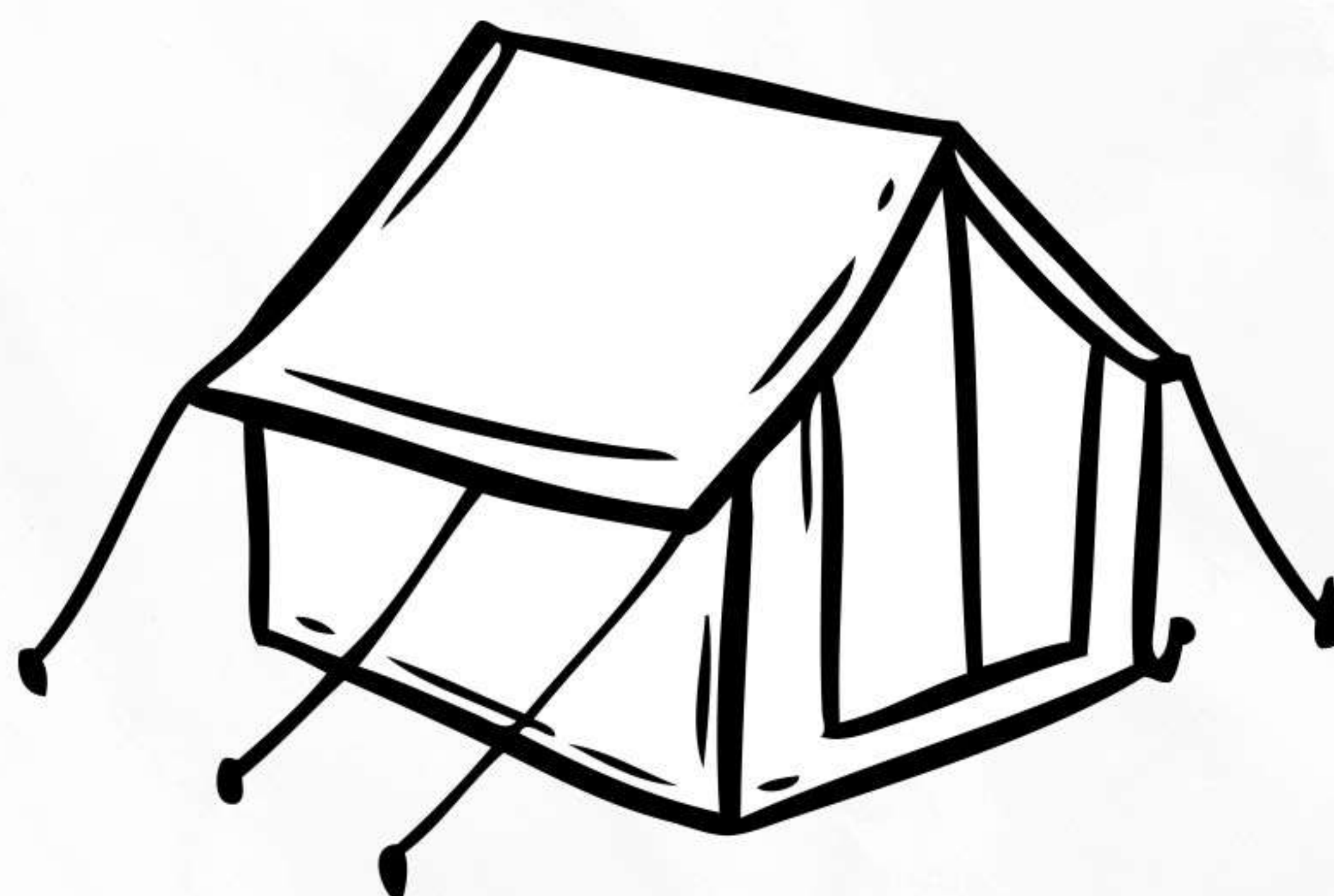
Triple Sharing: ₹ 16,500 + 5% GST

Note: Prices may vary on special batches.

CONNECT WITH US



VISIT OUR SOCIAL MEDIA HANDLES BY CLICKING ANY OF THE ABOVE ICONS



BOOKING

Process

BOOKING AMOUNT: ₹ 5,000/- PER PERSON

BALANCE AMOUNT TO BE PAID 2 DAYS BEFORE BOARDING.

NAME: ENLIVE TRIP EXPERIENCES PVT LTD

BANK NAME: IDFC FIRST

A/C NO: 10101996386

IFSC CODE: IDFB0020139

BRANCH: MALVIYA NAGAR



UPI TRANSFER



9899790488



9899790488



9899790488



enlivetrips@upi



OUR *Batches*

BATCH 1 06th May (Evening) - 13th May (Morning)

BATCH 2 13th May (Evening) - 20th May (Morning)

BATCH 3 20th May (Evening) - 27th May (Morning)

BATCH 4 27th May (Evening) - 03rd Jun (Morning)

BATCH 5 03rd Jun (Evening) - 10th Jun (Morning)

BATCH 6 10th Jun (Evening) - 17th Jun (Morning)

BATCH 7 17th Jun (Evening) - 24th Jun (Morning)

BATCH 8 24th Jun (Evening) - 01st Jul (Morning)

BATCH 9 01st Jul (Evening) - 08th Jul (Morning)

BATCH 10 08th Jul (Evening) - 15th Jul (Morning)

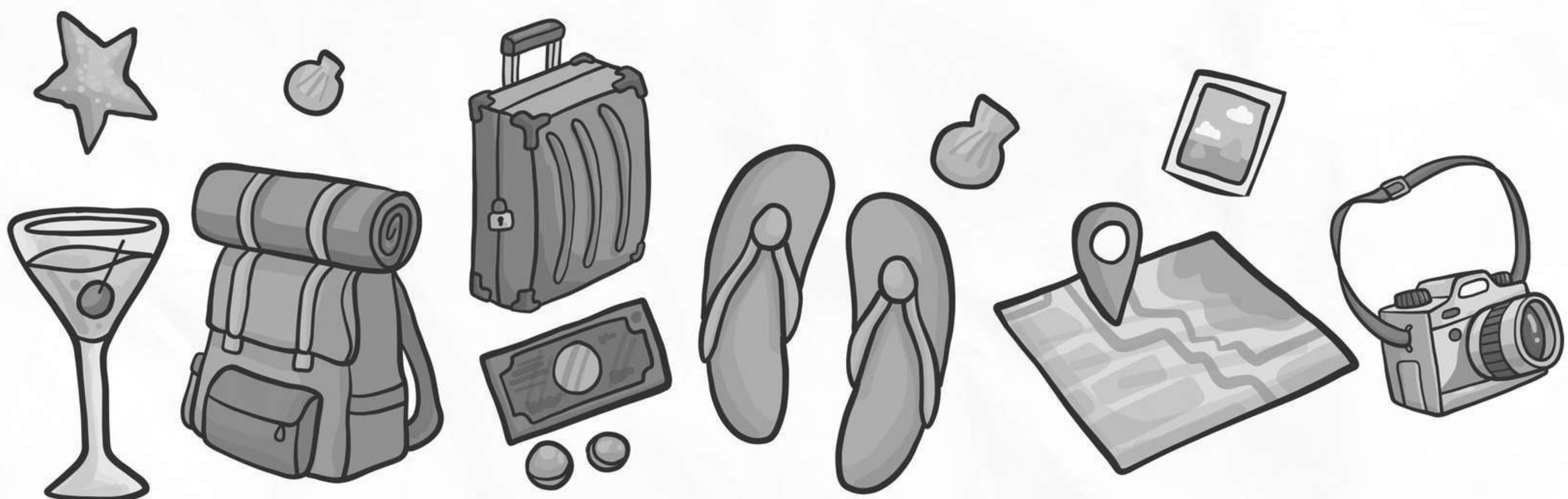
BATCH 11 15th Jul (Evening) - 22nd Jul (Morning)

BATCH 12 22nd Jul (Evening) - 29th Jul (Morning)

BATCH 13 29th Jul (Evening) - 05th Aug (Morning)

THINGS *to carry*

- Day backpack (20-30 ltr.)
- Sunscreen (SPF 40+)
- Floaters or Sandals
- Water bottle 1 Ltr
- 1 Down Jacket / Main Jacket
- Bag for all your Toiletries
- Outdoor Shoes
- Personal basic medical kit
- 3 Quick Dry Tees
- Mobile charger / Power bank
- Cold Cream
- 3 Pair of Cotton Socks
- Documents
- Quick dry towel
- Travel laundry bag
- Sanitizer
- Camera
- Sun cap
- Lip Balm
- Sunglasses / People who use spectacles (Use Photochromic glasses instead of contact lenses)





CANCELLATION

Policy

- Free Cancellation up to 60 days before the departure date (Booking amount is non-refundable)
- If you're canceling the trip and opting for a refund within 59 days to 45 days of the Departure Date then only 10% of the total trip cost (calculated after subtracting the booking amount) along with the booking amount (nonrefundable) will be charged as a cancellation fee and remaining sum would be refunded.
- If you're canceling the trip and opting for a refund within 44 Days to 30 Days of the Departure Date then only 25% of the total trip cost (calculated after subtracting the booking amount) along with the booking amount (nonrefundable) will be charged as a cancellation fee and remaining sum would be refunded.
- If you're canceling the trip and opting for a refund within 29 Days to 15 Days of the Departure Date then only 50% of the total trip cost (calculated after subtracting the booking amount) along with the booking amount (nonrefundable) will be charged as a cancellation fee and remaining sum would be refunded.
- If you're canceling the trip and opting for a refund within 15 Days to 8 Days of the Departure Date then only 75% of the total trip cost (calculated after subtracting the booking amount) along with the booking amount (nonrefundable) will be charged as a cancellation fee and remaining sum would be refunded.

- If you're canceling the trip and opting for a refund within 7 Days from the Departure Date then 100% of the total trip cost (calculated after subtracting the booking amount) along with the booking amount (non-refundable) will be charged as a cancellation fee and remaining sum would be refunded. You are not applicable for a refund if you fail to show up on the day of departure under the given timeline that has been provided to you beforehand.
- There would be no refund provided in case there occur some problems due to government orders, harsh weather conditions, protests, landslides, or any other unforeseen circumstances. On the occasion of any such happenings, we have a backup plan ready most of the time and we'll be moving onto that.
- There are times when we would have to cancel some activities mentioned in the itinerary but it's only due to the reason that we would be bound by a circumstance that is not in our control.
- If a trek is called off at the last moment due to a natural calamity/unforeseen circumstances (like rain, snowfall, earthquake, landslides, strike, bandh, etc.) then the participants would be provided with a travel voucher for the same amount that can be used within 365 days of the issuance date for any package worth the same amount.
- If a trek/trip has to be aborted midway due to a natural calamity/unforeseen circumstances (like rain, snowfall, earthquake, landslides, strike, bandh, etc). In that case, no refund would be provided.
- EnLive Trips will not bear any extra expense due to any natural calamity/unforeseen circumstances (like rain, snowfall, earthquake, landslides, strike, bandh, etc).
- Cancellations policy differs for popular destinations and also during peak season, kindly confirm with your operator once.



TERMS & CONDITIONS

- Vouchers are non-transferable and valid only for the services mentioned herein.
- Any services not specifically requested, confirmed and noted on vouchers will not be rendered.
- All extras are to be paid directly to the hotels/the service providers.
- Please stick to itinerary, anything extra shall be chargeable (at the location itself.)
- Any service unused is non-refundable.
- The company shall not be liable for damages/charges incurred by travelers if any of the following reasons apply:
- Cancellations policy differs for popular destinations and also during peak season, kindly confirm with your operator once.
 - Natural disaster, war, civil unrest, and alteration or cancellation of tour itinerary due to such causes.
 - Accidents during transportation or accommodations, damage by fire.
 - Orders of either Indian governments or immigration regulations, isolation resulting from infectious diseases, and tour itinerary alteration or cancellation owing to such causes.
 - Accidents occurring during the travelers free activities.
 - Food poisoning.
 - Theft.

